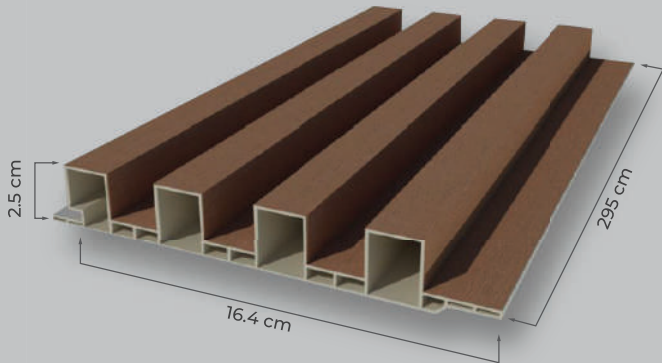




DEWALL

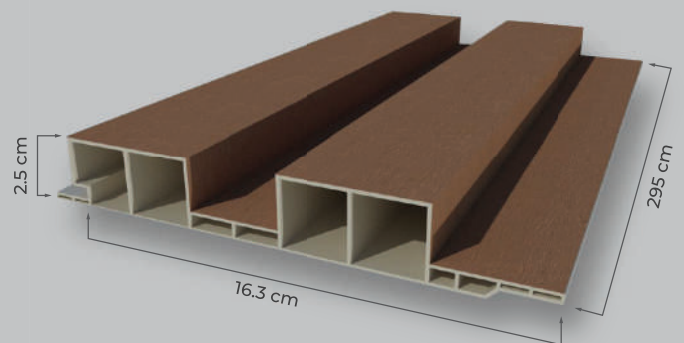
**WALL PANEL
COMPOSITE**

DW 1



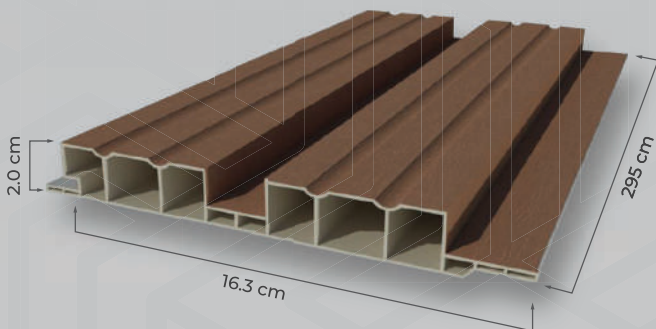
Length	Effective Width	Thickness	Weight/ M'	Packaging
295 cm	16.4 cm	2.5 cm	1.10 kg	10 Plank

DW 2



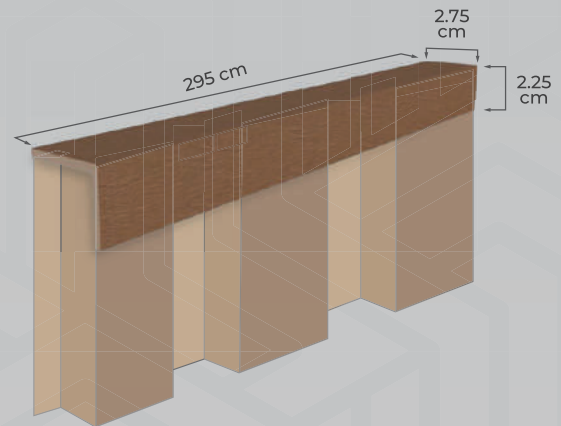
Length	Effective Width	Thickness	Weight/ M'	Packaging
295 cm	16.3 cm	2.5 cm	1.05 kg	6 Plank

DW 3



Length	Effective Width	Thickness	Weight/ M'	Packaging
295 cm	16.3 cm	2.0 cm	1.02 kg	8 Plank

Dewall List

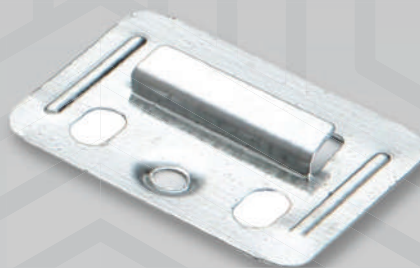


Length	Effective Width	Thickness	Weight/ M'	Packaging
295 cm	2.25/2.75 cm	0.25 cm	0.24 kg	20 Pcs

Accessories

Dewall Clip Set

• Selling in sets : Contents/box 30 sets



Bracket Clips

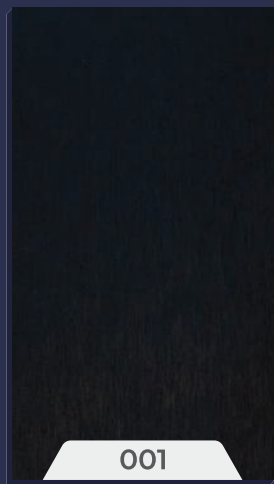


Screw



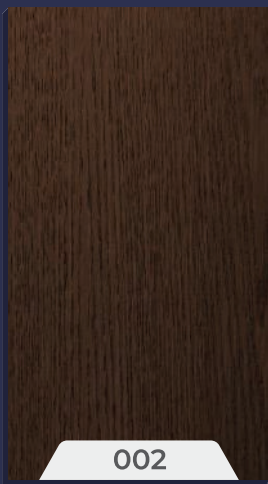
S8 Fisher

Motif Variant



001

Pitch Dark



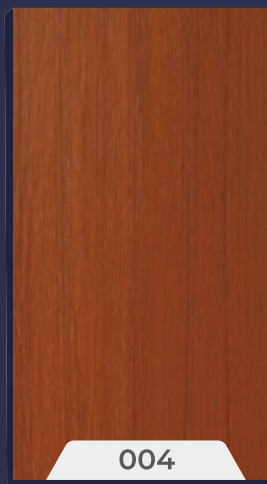
002

Dark Brown



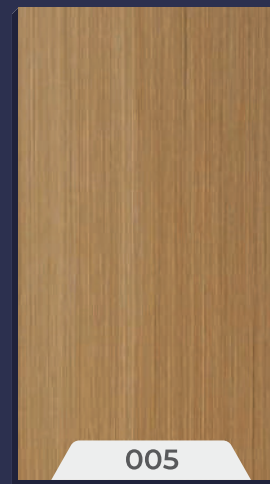
003

Walnut Brown



004

Red Teak



005

Yellow Oak



006

Spring Red



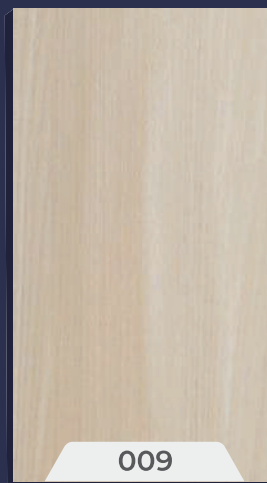
007

French Grey



008

Light Coffee



009

White Oak



010

White Snow

Advantages



Chemical Resistance



Varied Motifs



Easy Maintenance



Easy to Install



Waterproof



Self Extinguishing



Stronger*



Environmentally
Friendly**



SCAN ME
For More Information

*Wall panels are made of solid uPVC material, thus stronger than other foam-form WPC.

**Low VOC (Volatile Organic Compound) content with low evaporation due to the use of the Hotmelt Adhesive system.

Installation

A. Preparation

1. Check the installation wall is clean, dry, smooth, and free from dust or any other dirt.
2. Prepare the necessary tools and materials:
 - Hammer, angle grinder, sealant gun, hand measuring tape, pencil, waterpass.
 - Bracket Clips, S8 Fisher screws, 1 tube of OCI N192 or OCI N193 sealant.

B. Installation Steps

1. Determine the initial position of the panel by selecting a corner or starting point for panel installation. Ensure accurate horizontal and vertical lines using a spirit level and measuring tool.
2. Cut the panel if necessary using an angle grinder to trim Dewall to the required size. Ensure precise measurements and accurate cutting of the panel.



3. Use OCI Sealant: Apply sealant to the back of Dewall to bond it with the wall surface.
4. Install the first panel at the predetermined corner or starting point. Ensure the panel is aligned straight with the help of a spirit level and measuring tool. Use S8 Fisher screws to attach the panel to the wall securely. Ensure a sturdy and safe installation.



5. Continue installing subsequent panels in sequence. Ensure each panel is tightly installed and aligned parallel to the previous panel. Regularly check alignment using a spirit level to ensure proper alignment.
6. Trim the last panel when approaching the end of the wall or an area that requires a panel of a different size. Measure and cut the last panel carefully to ensure a proper fit.
7. Finishing and Closure: After all panels are securely installed, double-check the entire installation. Ensure all panels are securely and tightly attached. Also, inspect to ensure that the corners and joints between panels look neat.
8. Cleaning and Maintenance: After installation is complete, clean Dewall with a soft cloth and gentle cleaner. Avoid using harsh chemicals or rough brushes that may damage the panel surface. Perform regular cleaning periodically to maintain the appearance of the panels.

Handling & Storage

1. Incoming and Inspection

- When receiving Dewall products, carefully inspect their condition. Ensure there is no damage, scratches, or other defects on the panels.
- Check the quantity of panels to match the order and ensure the specifications meet the requirements.

2. Storage

- Store Dewall in a dry area protected from direct sunlight and free from moisture.
- Ensure panels are stored flat and not compressed by heavy loads or other materials.

3. Handling

- When lifting or moving panels, ensure the use of appropriate lifting equipment.
- Avoid dropping or forcefully impacting the panels as it may cause damage.

4. Installation

- Always follow the installation instructions provided by Dewall manufacturer to ensure proper installation.
- Use appropriate tools and ensure panels are installed securely and firmly.
- Avoid excessive pressure when installing panels to prevent damage to the panel surface.
- Perform the work according to the applicable workplace safety regulations.

5. Cleaning and Maintenance

- Clean the panels regularly using a soft cloth and gentle cleaner.
- Avoid using harsh chemicals or rough brushes that may damage the panel surface.
- Check the panels periodically to ensure there is no damage or wear on the panels. If any damage is found, promptly repair or replace as needed.

6. Disposal

- If it is necessary to dispose of damaged or no longer used panels, ensure to dispose of them according to recycling regulations or waste management guidelines applicable in your area.